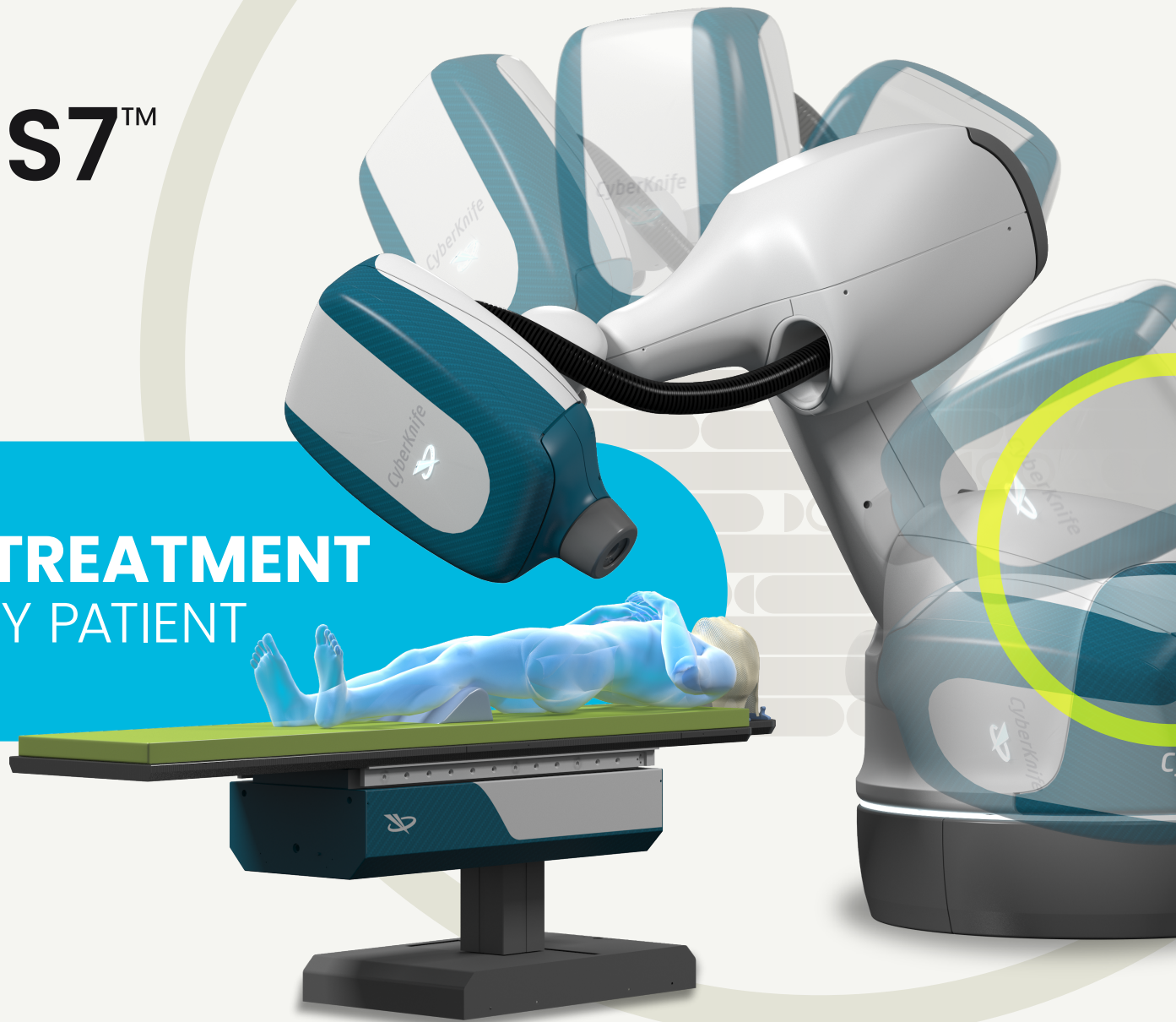


CyberKnife® S7™

PRECISE ROBOTIC TREATMENT
AS INDIVIDUAL AS EVERY PATIENT



ACCURAY

Deliver more. **Better. Faster**

CyberKnife® S7™

BENEFITS OF THE CYBERKNIFE® S7™ TREATMENT DELIVERY SYSTEM

True robotic precision: Enable high definition radiotherapy anywhere in the body with the widest range of motion in the industry. Deliver stereotactic radiosurgery (SRS) with end-to-end sub-millimeter accuracy.

AI-driven real-time tracking with dynamic delivery: Continually monitor patient and target motion to confidently deliver the prescribed dose while minimizing dose to surrounding critical structures and healthy tissue.

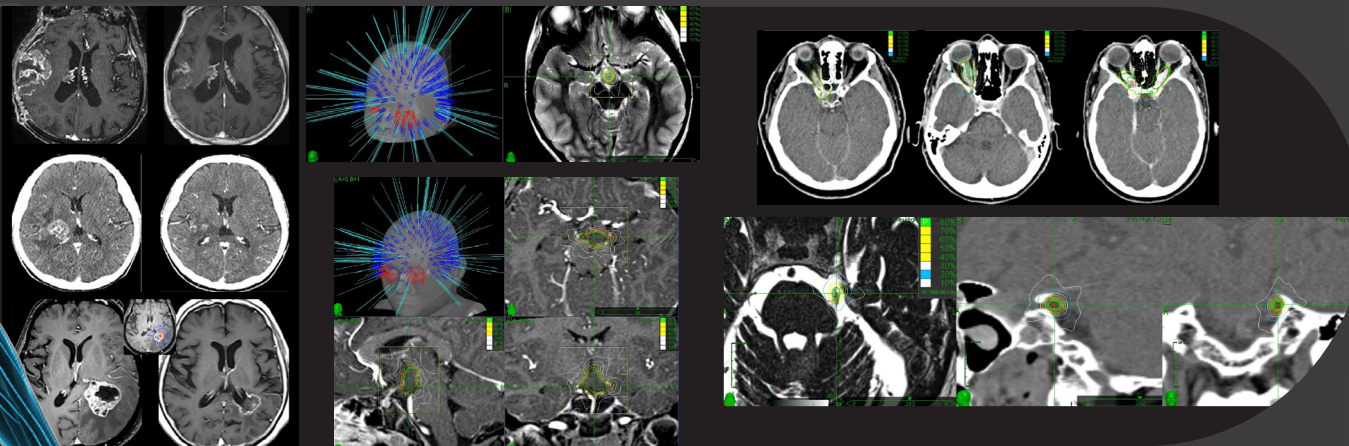
Faster treatment times—improved patient experiences: Leverage the only multileaf collimator on a robotic arm to streamline treatments and improve patient comfort.

More accurate treatments—improved outcomes:

Clinical studies indicate the CyberKnife® S7™ System's unrivaled precision can deliver excellent long-term control, retaining quality of life with minimal side effects.

Unprecedented versatility in non-surgical treatment applications:

Deliver highly precise, highly individualized non-surgical treatments for a wide range of clinical indications including neurological disorders, primary and metastatic tumors in the brain and spine. Offer the precision and sharp dose gradient required for multiple re-treatments.



The CyberKnife S7 System – the precision and accuracy you need to treat tumors or lesions in the brain and spine with confidence. Expand your treatment population and boldly differentiate your practice.

FULLY INTEGRATED TREATMENT PLANNING AND DELIVERY

PLAN

Accuray Precision® Treatment Planning System

KEY FEATURES

- Integrated, fast and intuitive treatment planning for multiple Accuray delivery systems
- Fast Monte Carlo Dose Calculation for all collimator options giving results in minutes
- Comprehensive suite of contouring tools including boolean operators
- AutoSegmentation™ options for the brain
- Multi-modality rigid image fusion
 - Deformable Image Registration™
- Side-by-side treatment plan comparison
- PreciseRTX® Re-treatment option
- Remote plan review and approval
- Seamless image transfer and advanced features to group multiple brain metastases allowing smooth planning capabilities*
- Ability to define targets along the anterior and posterior commissure line*
- Capture intermediate optimization results and compare with DVH comparator for simplified planning through Optimization Snapshots*
- Access to a suite of Brainlab Element applications for contouring, fusion and manipulation of images to create accurate target volumes before planning

SEE

iDMS® Data Management System

KEY FEATURES

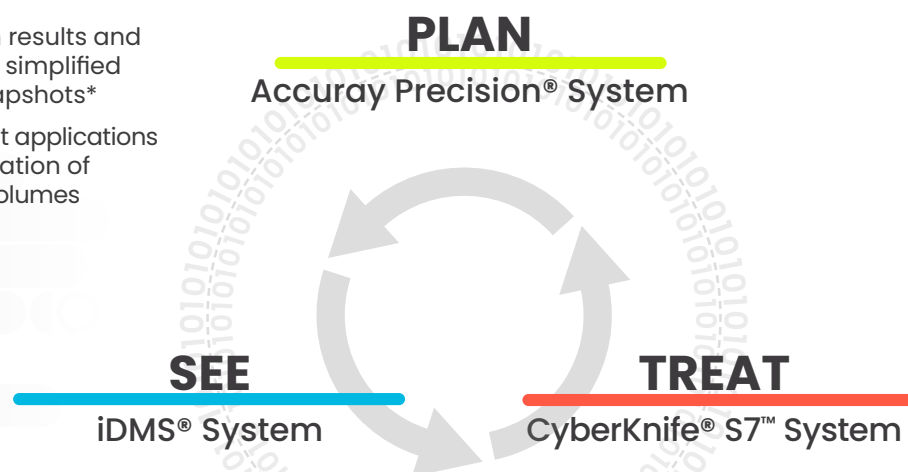
- Integrated data management system for multiple Accuray delivery systems
- Remote review of daily imaging
- Digital signature capabilities
- Individual user privileges
- Patient record management for multiple Accuray systems
- DICOM data import/export and Oncology Information System interfaces
- Data storage and management tools with storage vault option
- Disaster recovery features, including automatic backup and data mirroring
- Report Administration Application supports customizable generation of patient, plan and system utilization reports

TREAT

CyberKnife® S7™ Treatment Delivery System

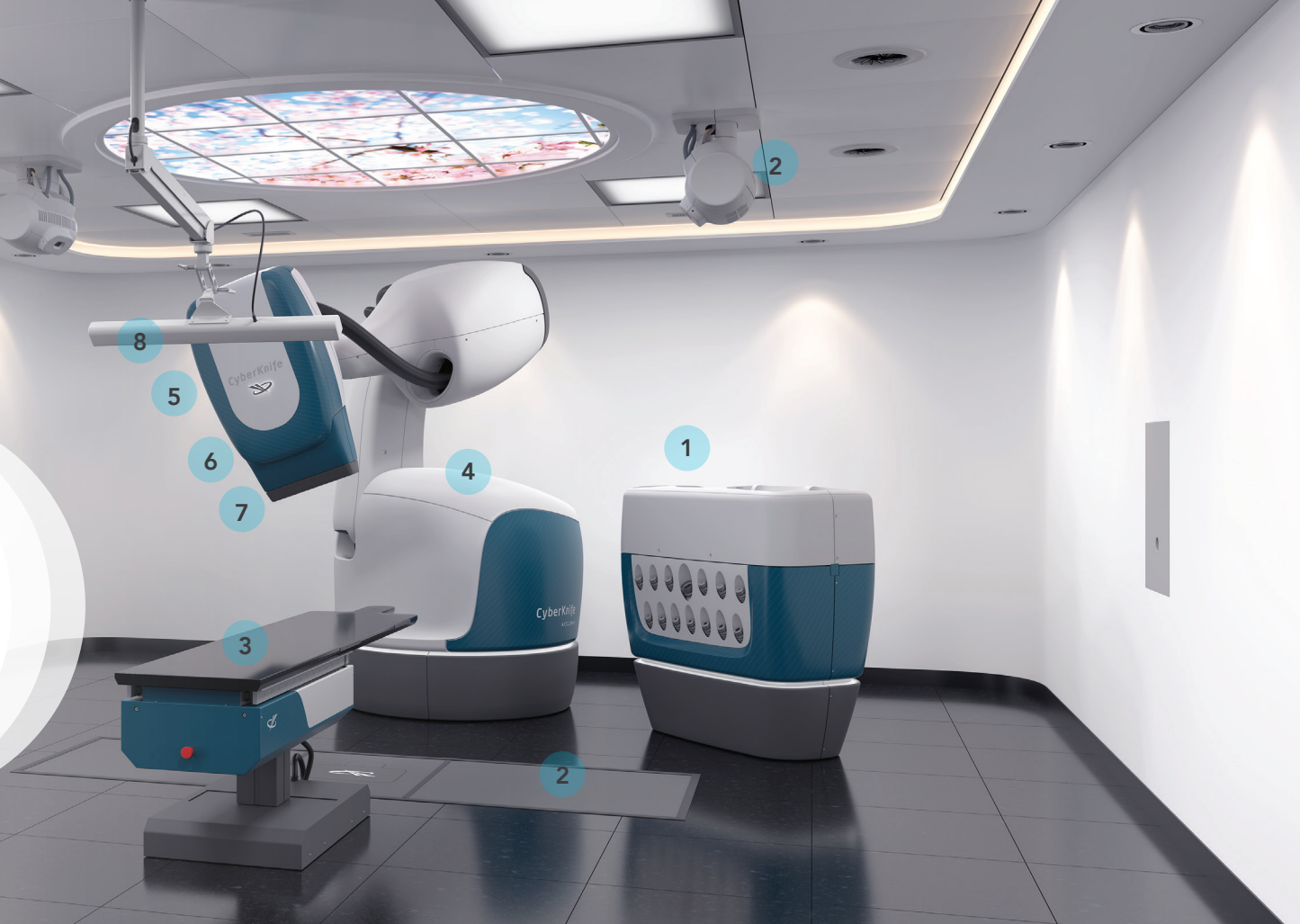
KEY FEATURES

- Robotic manipulator with the widest range of motion of any radiation therapy system
- Automated non-coplanar beam delivery
- Fully integrated image guidance system (stereoscopic X-ray sources and in-floor detectors)
- Anatomy-specific fiducial-free tracking modules for intracranial and spine tumors
- 6D fiducial tracking module for soft tissues
- Compact linac minimizes treatment time
- The Xchange® Robotic Collimator System automatically changes collimators – no user intervention
- InCise™ Multileaf Collimator (MLC) with expanded treatment options
 - Iris™ Variable Aperture Collimator for efficient delivery of multiple cone collimator sizes
 - Fixed cone collimators for neurological applications and small tumors
- Intuitive, workflow-based user interface – critical patient alignment and treatment delivery information displayed on dual monitors
- The Synchrony® Fiducial Tracking™ with Respiratory Modeling monitors in real-time and keeps the beam on spine target as the patient breathes normally – even for irregular breathing patterns
- End-to-end sub-millimeter delivery accuracy – even for tumors that move with respiration
- RoboCouch® Patient Positioning System with sub-millimeter 6D positioning accuracy and 500-pound weight capacity



* Works in progress. Accuray Precision Treatment Planning System 3.4 availability is pending development and regulatory clearance or approval.

THE CYBERKNIFE® S7™ TREATMENT DELIVERY SYSTEM



1. Xchange® Robotic Collimator Changer
2. X-ray Imaging System
3. Standard Couch
4. Robotic Manipulator
5. Linear Accelerator
6. InCise™ Multileaf Collimator (optional)
7. Iris™ Variable Aperture Collimator
8. Synchrony® Respiratory Camera Array

*The CyberKnife® S7™ System is fully integrated
for brain and spine SRS treatments.*

*For more information
regarding the
CyberKnife S7 System
send an inquiry to
sales@accuray.com*

Important Safety Information:

Most side effects of radiotherapy, including radiotherapy delivered with Accuray systems, are mild and temporary, often involving fatigue, nausea, and skin irritation. Side effects can be severe, however, leading to pain, alterations in normal body functions (for example, urinary or salivary function), deterioration of quality of life, permanent injury and even death. Side effects can occur during or shortly after radiation treatment or in the months and years following radiation. The nature and severity of side effects depend on many factors, including the size and location of the treated tumor, the treatment technique (for example, the radiation dose), the patient's general medical condition, to name a few. For more details about the side effects of your radiation therapy, and to see if treatment with an Accuray product is right for you, ask your doctor.

CyberKnife® S7™

Clinical images courtesy of:
Pantaleo Romanelli, Cyberknife Center, Centro diagnostico italiano, Milano, ITA
Hiroshi K Inoue, Cyber Center, Kanto Neurosurgical Hospital, Japan
Alfredo Conti, Department of Neurosurgery, Charité - Universitätsmedizin Berlin
Carolin Senger Department of Radiation Oncology, Charité Universitätsmedizin Berlin

ACCURAY

Deliver more. **Better. Faster**



UNITED STATES

Accuray Corporate Headquarters

1310 Chesapeake Terrace
Sunnyvale, CA 94089
USA
Tel: +1.408.716.4600
Toll Free: 1.888.522.3740
Fax: +1.408.716.4601
Email: sales@accuray.com

Accuray Incorporated

1240 Deming Way
Madison, WI 53717
USA
Tel: +1.608.824.2800
Fax: +1.608.824.2996

ASIA

Accuray Japan K.K.

Shin Otemachi Building 7F
2-2-1 Otemachi, Chiyoda-ku
Tokyo 100-0004
Japan
Tel: +81.3.6265.1526
Fax: +81.3.3272.6166

Accuray Asia Ltd.

16/F, Tower 5, The Gateway
Harbour City
15 Canton Road, T.S.T
Hong Kong
Tel : +852.2247.8688
Fax : +852.2175.5799

EUROPE

Accuray Accelerator Technology (Chengdu) Co., Ltd.

No. 8, Kexin Road
Hi-Tech Zone (West Area)
Chengdu
611731 Sichuan
China

Accuray International Sarl

Route de la Longeraie 9
CH - 1110 Morges
Switzerland
Tel: +41.21.545.9500
Fax: +41.21.545.9501

Important Safety Information:

Most side effects of radiotherapy, including radiotherapy delivered with Accuray systems, are mild and temporary, often involving fatigue, nausea, and skin irritation. Side effects can be severe, however, leading to pain, alterations in normal body functions (for example, urinary or salivary function), deterioration of quality of life, permanent injury and even death. Side effects can occur during or shortly after radiation treatment or in the months and years following radiation. The nature and severity of side effects depend on many factors, including the size and location of the treated tumor, the treatment technique (for example, the radiation dose), and the patient's general medical condition, to name a few. For more details about the side effects of your radiation therapy, and to see if treatment with an Accuray product is right for you, ask your doctor. Accuray Incorporated as a medical device manufacturer cannot and does not recommend specific treatment approaches. Individual results may vary.