



EMIS-MAIL FOR PRISONS AND CORRECTIONAL FACILITIES

Letter, Parcel & Personal Belongings Metal Detector

- Detection of all metal contraband (including disposable razor blades and paperclips)
- Extremely high sensitivity for detection beyond NIJ 0602.02 Very Small Object level
- Portable design: up to 12 hours continuous use from built-in rechargeable batteries
- Simple automated screening requires minimal training and no prior knowledge

Meet and exceed
NIJ 0602.02 Standard
detection requirements



Versatile application for use in:

- Special Housing Units
- Cell Shake-Down
- Mail Room and more

No installation,
calibration or periodic
maintenance required



www.ceia.net

Threat Detection through Electromagnetics

All rights reserved. CEIA reserves the right to make changes, at any moment and without notice, to the models (including programming), their accessories and options, to the prices and conditions of sale



The **EMIS-MAIL** is designed to provide a portable solution for screening letters, Parcels and personal belongings, **detecting very small metal contraband** such as disposable razor blades, paperclips, ammunition, etc.

The EMIS-MAIL is **uniquely qualified to operate in a prison or correctional facility environment** with specific settings that meet and exceed those required by the **NIJ 0602.02 Standard**.

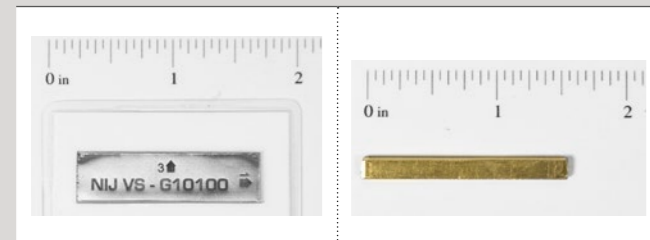
The **EMIS-MAIL provides multiple pre-defined security programs** allowing its use in a variety of prison applications, such as inmate mail screening versus staff mail screening.

Along with meeting the strictest safety and security standards, EMIS-MAIL is **also compliant with, and certified to, International Mail and Cargo screening Regulations** for the detection of metal components of parcel bombs without false alarms for non-threat items such as metal staples, paperclips and metal binding spirals.

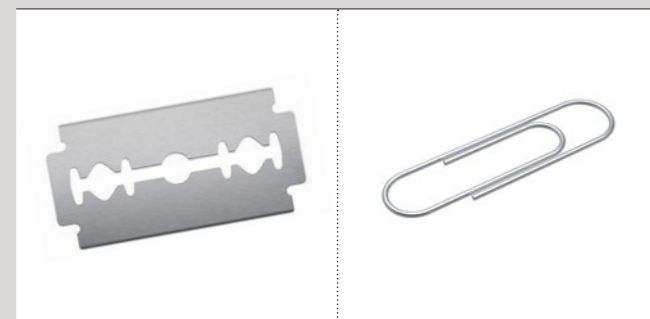
Benefits

- Meets detection requirements for each level of the NIJ 0602.02 Standard
- Exceeds NIJ 0602.02 Very Small Object level
- Operates both on the mains power supply and with built-in NiMH rechargeable batteries
- Up to 12 hours continuous battery operation with 6 hours charge
- Designed for portable use: no installation, calibration or periodic maintenance required
- Very easy to use, inspects parcels and letters up to 450 mm in width and 75 mm thickness
- Pinpoint exact location of threats within scanned items

MEETS DETECTION REQUIREMENTS OF THE NIJ 0602.02 STANDARD



EXCEEDS NIJ 0602.02 VERY SMALL OBJECT LEVEL



Easy installation and use

The EMIS-MAIL is very easy to use and provides a fast and automatic alarm/no alarm signal confirmation per each inspected package. Its compact, ergonomic design along with the electric and built-in NiMH rechargeable battery power supply allows for independent operation in a variety of locations.

An optional embedded radioactive detector is also available for radioactive material threat detection.

EMIS-MAIL Corrections applications

Versatile application for use in:

- Special Housing Units (SHU)
- Cell Shake-Downs
- Receiving and Discharge

For the screening of:

- Library books and magazines designates for inmates
- Inmates personal belongings, hygiene items and food items
- Inmate clothing/shoes used for transport/bus operations

PERSONAL HYGIENE ITEMS BEING SCREENED BY THE SCANNER



Simple automated screening requires minimal training and no prior knowledge



Equipped with special program that visualize the location of metal contraband

- Single mass identified in the upper right corner of the object.



- Single mass identified in the upper right corner of the object.

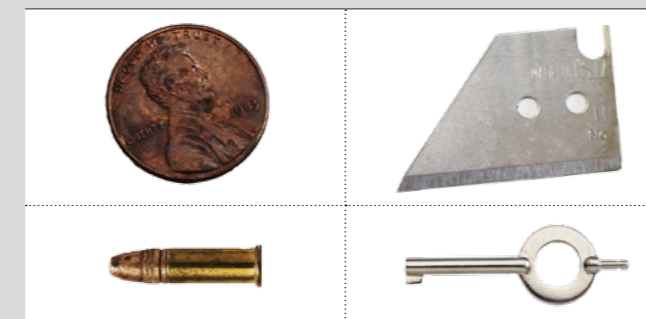


- One or more additional masses can be present within the shaded zone.

- One or more masses can be present within the shaded zone.



POSSIBLE THREAT ITEMS: INMATE SCREENING



POSSIBLE THREAT ITEMS: STAFF MAIL





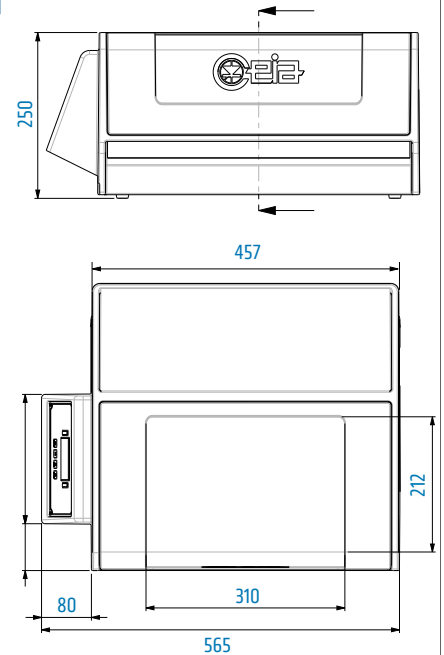
EMIS-MAIL Specifications

GENERAL CHARACTERISTICS	High inspection speed		
	No alarm on metal staples, paper-clips and metal binding spirals		
	Digital programming with high-resolution OLED graphic display		
	Optical and acoustic alarm signaling		
	Integrated autodiagnosis system		
	Permanent memory storage of operating parameters without back-up batteries		
	Independent operation, with mains power supply or incorporated batteries		
	Specific Settings available for Prison parcels inspection (Dept. of Justice requirements)		
Compliant with NIJ-0602.02 Dept. of Justice Detection requirements			
STRUCTURE	Transit opening	450 mm x 75 mm	
	Degree of protection	IP40	
WEIGHT	16 kg		
POWER SUPPLY	Voltage	100-240 V~ single-phase - 50/60 Hz with external AC/DC adapter	
	Current	1.07 A max	
	Battery operation	6 x 1.2V NiMH size D incorporated Battery life: 12 hours (8 hours with IXC module) Battery-charger incorporated: Recharging time 6 hours	
PROGRAMMING	Type	Local: via integrated keypad Remote: via Bluetooth, RS232	
	Data Logger Memory capacity	10000 events	
SIGNALLING	Acoustic	Internal buzzer	
	Optical	High-contrast OLED graphic display with bar-graph indication	
		LED indicators on the control panel	RED: Alarm, Autodiagnosis GREEN: OK, Power supply BLUE: Alarm, detection of radioactive substances
SECURITY/SAFETY	Access to programming protected by password Insulation from mains voltage		
COMMUNICATION	Incorporated Bluetooth (FCC ID: Q0QWT12 - IC:5123A-BGTWT12A) interface, RS232		
ENVIRONMENTAL DATA	Temperature	Operating	-10 to +50 °C
		Storage	-25 to +60 °C
	Relative humidity	5 to 90 %, without condensation	
CONFORMITY*	Safety	UL61010-1 Safety requirements for electrical equipment for measurement, control and laboratory use - Part 1: General requirements	
		EMC	
		EN61000-6-1:2007 Electromagnetic Compatibility (EMC) - Part 6-1: Generic standards - Immunity for residential, commercial and light-industrial environments ACGIH, 2012 Threshold Limit Value (TLV) for "Sub-Radiofrequency (30 kHz and below) Magnetic Fields" IEEE C95.1-1999: IEEE Standard for Safety Levels with Respect to Human Exposure to Radio Frequency Electromagnetic Fields, 3 kHz to 300 GHz European Directive 2004/108/CE	

*Test Reports available upon request

NATO STOCK NUMBER 6665150105807

Dimensions [mm]



Options

GAMMA RADIATION DETECTION (code 67197)

- A detector of radioactive sources can be included on demand. The gamma alarm indication includes the activity level (low/medium/high) and the CPS value (counts per second).
- Analysis time: 5 seconds.

IXC MODULE (code 66751)

- Integrated Web-server
- 100base-T Ethernet
- Full Speed USB interface
- Wi-Fi 802.11b/g



Zona Industriale 54/G, 52041 Vicinaggio - Arezzo [ITALY]

Tel.: +39 0575 4181 • Fax: +39 0575 418298 • E-mail: infosecurity@ceia-spa.com

www.ceia.net

DP210K0003V1000hUS

CEIA reserves the right to make changes, at any moment and without notice, to the models (including programming), their accessories and options, to the prices and conditions of sale

