

HI-PE Plus

Enhanced Walk-Through Multi-Zone Metal Detector

NEW



Applications

- ✓ Government Buildings
- ✓ Industries (Security)
- ✓ Nuclear Facilities (Security)
- ✓ Prisons (visitors)
- ✓ Public Events
- ✓ Amusement Parks
- ✓ Courts
- ✓ Cruise ships
- ✓ Data Processing Centers (EDP)
- ✓ Hotels
- ✓ Schools Security

- Accurate Detection of magnetic, non-magnetic and mixed-alloy metal weapons
- High Discrimination and Throughput
- Compliant with the Strictest Security Standards for weapons detection
- Exceptional Immunity to external interferences
- Unmatched Reliability
- Rapid Installation



www.ceia.net

Threat Detection through Electromagnetics

CEIA reserves the right to make changes, at any moment and without notice, to the models (including programming), their accessories and options, to the prices and conditions of sale

CEIA HI-PE Plus

Enhanced Multi-Zone Metal Detector



CEIA is proud to present the new HI-PE Plus Multi-Zone Metal Detector, a development of the well-established HI-PE model. Accurate detection of all metals, high level of discrimination, full compliance with the latest Security Standards and exceptional immunity to external interferences are among the main features of this new device

Features



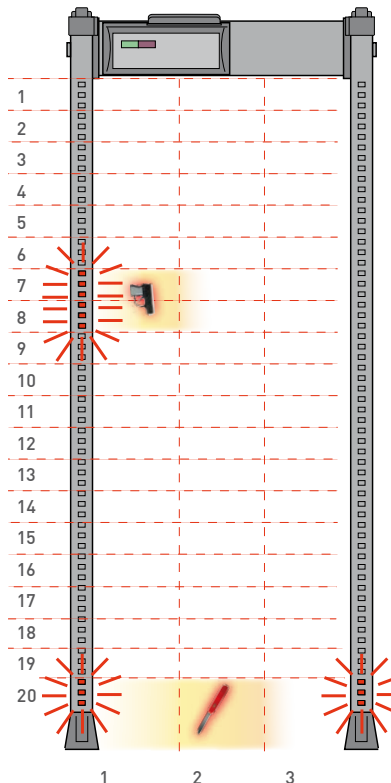
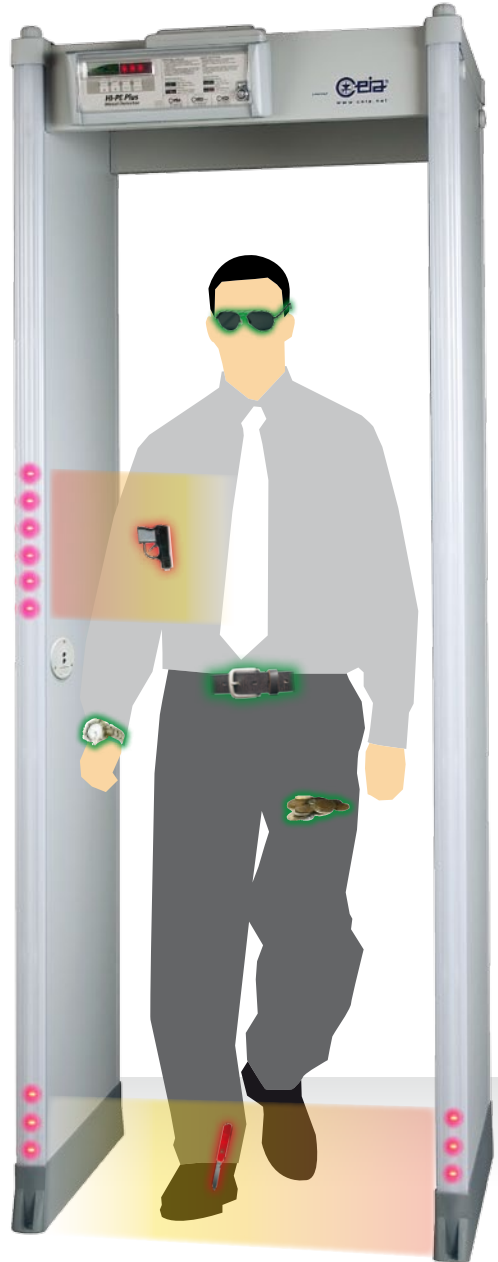
- Capable of detecting the largest range of threat objects composed of magnetic, non-magnetic and mixed alloys
- Quick, accurate analysis of all parts of the body of people in transit, from the shoe level to the crossbar



- 60 pinpointing zones with high resolution & precision ✓ 20 Vertical x 3 Lateral



- Met-Identity for Identification of Threat Composition



Met-Identity Technology

In the case of an alarm the type of the metal mass detected can be shown on the display



➤ FERROUS METAL



➤ NON FERROUS METAL

60 Zones!

You know the exact position of the weapon without lifting a finger

Benefits



- Cutting edge discrimination technology allows personal effects to be ignored, creating rapid transit flow



- Uniform inspection field, allowing more personal metal effects to be ignored

ALARM



NO ALARM



Advanced Alarm Indication



- 4 Multi-Zones Display Bars, each programmable as entry Stop/Go indication and/or localization lights



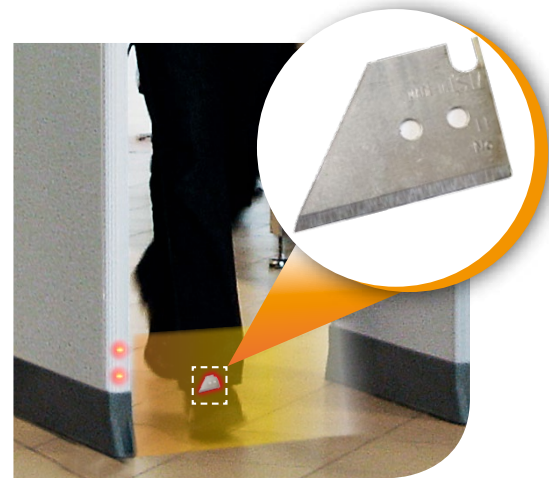
- Flexible Acoustic Alarm Signaling System:
 - ✓ 10 Continuous and Pulsed Tones
 - ✓ 34 Special Sounds



- 10 Acoustic Intensity Levels programmable from 0 up to 90 dBA at 1 m



- High Precision Transit Counter:
 - ✓ In-Bound Transits
 - ✓ Out-Bound Transits
 - ✓ Alarm Rate
 - ✓ Automatic Rescreening Compensation



- ✓ Light bars indicate metal position vertically and laterally and can also show pacing lights

Comprehensive Security Features



- Over 40 built-in Security Programs
 - ✓ Up to 22 International Standards
 - ✓ Up to 20 Customizable Levels



- Chip Card system for fast, simple and secure parameter changes (i.e. alarm volume and tone, counter reading etc...) and Security Level Selection



- Any security standard can be enhanced with selectable random alarm probability



- ✓ Chip card for automatic selection of Security Levels and parameter changes



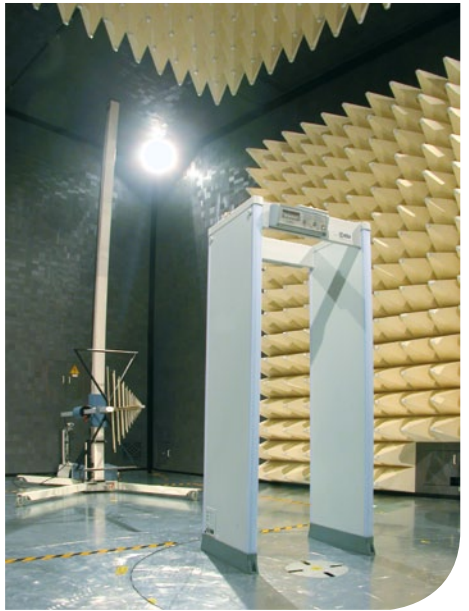
Rapid Installation



- One touch guided automatic installation (OTS)
Innovative function assisting the installation through an automatic step-by-step procedure



- Continuous self diagnostics assures monitored performance reliability



Industry Leader in Immunity against External Interferences

Communication Capabilities



| TYPE OF OPERATION | Ethernet | USB | Infrared | Bluetooth | RS-232 |
|------------------------|----------|-----|----------|-----------|--------|
| Maintenance | ○ | ○ | | ● | ● |
| Remote Control | ○ | | ● | ● | ● |
| Remote Data collection | ○ | | | | |

Breakthrough Value



- Superior CEIA reliability allows maximum ROI
The overall system is characterized by sturdy, reliable electronic and mechanical construction, and ease of installation.



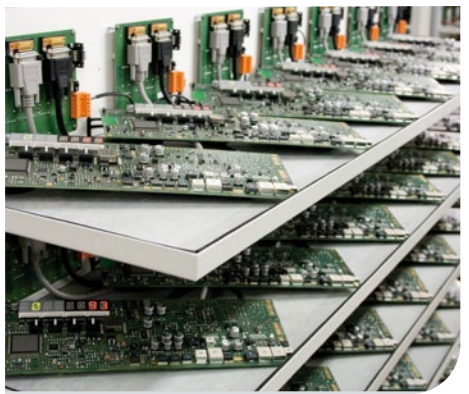
- No periodic re-calibration and preventive maintenance required
- 100% modern digital components for longer life and consistent performance



- Custom designed DSP allows unparalleled detection



- Powered by low voltage DC resulting in the safest gate operation

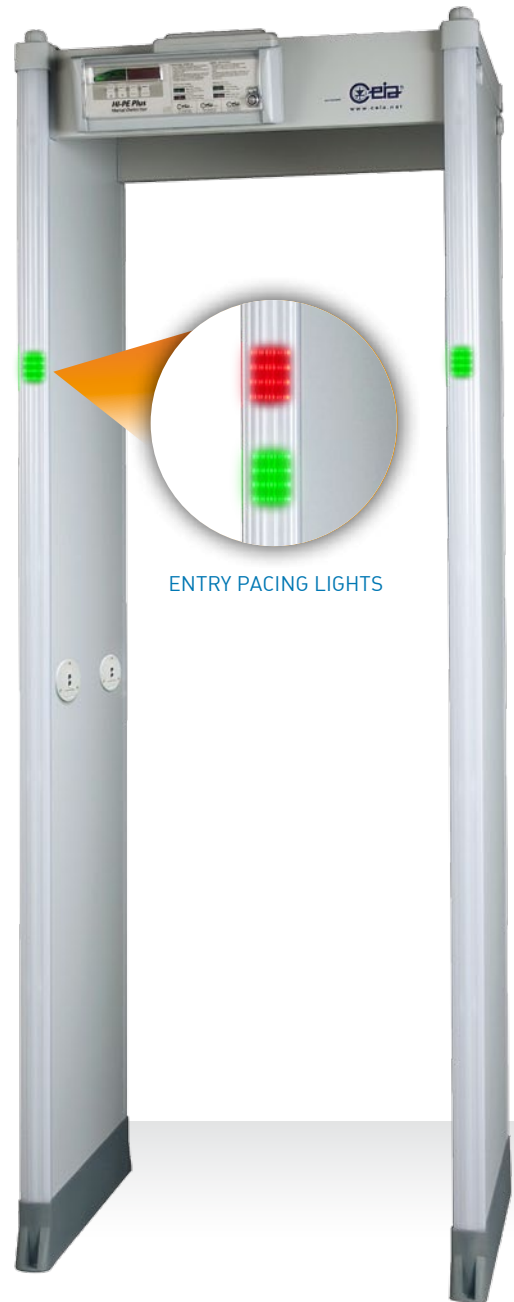


Very high MTBF (mean time between failure) obtained through Large Scale Integration devices and 200 hours burn-in testing

Model Configuration

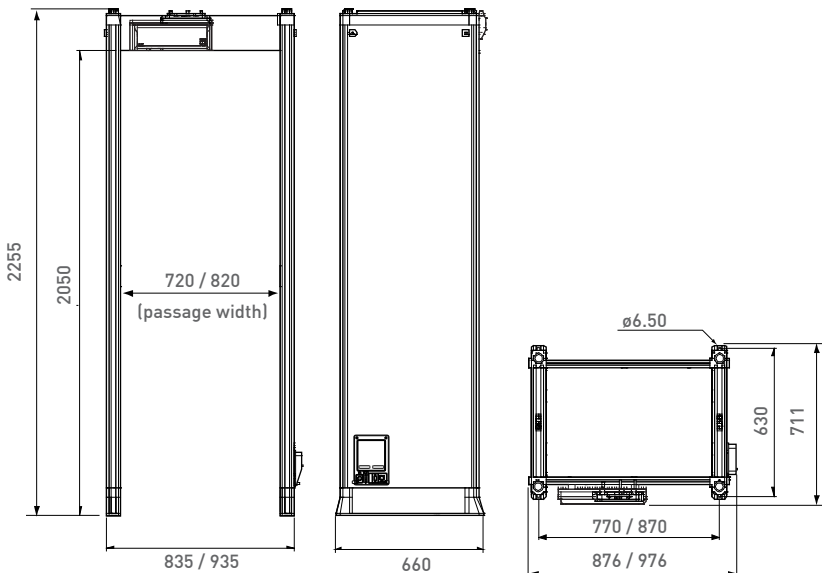
| Features | HI-PE/PZ Plus |
|--|---------------|
| 4 display bars individually programmable as zone indicators and/or pacing lights | ● |
| 60 localization zones with left, center and right indication | ● |
| Met-Identity technology | ● |
| Powered by safe low voltage DC | ● |
| Chip Card Reader | ● |
| One Touch Automatic Self Installation (OTS) | ● |
| Bluetooth, infrared and RS-232 communication | ● |
| Password and hardware key access protection | ● |
| Anti-tamper on/off switch | ● |
| High precision transit counter | ○ |
| Programmable Random Alarm capability* | ○ |
| Weather resistant protection | ○ |
| Anti-vandalism, anti-tampering protection | ○ |
| IP65 protection (includes weather resistant and anti-vandalism options) | ○ |
| Integrated web-server & logger (includes Ethernet and USB interface) | ○ |
| Long life crossbar battery back-up | ○ |
| Embedded battery back-up | ○ |
| 820 mm useful passage width | ○ |

● STANDARD ○ OPTION *Transit Counter required



ENTRY PACING LIGHTS

Dimensions



UNDER THE ALARM THRESHOLD

- Small metal mass
- Medium metal mass

OVER THE ALARM THRESHOLD

- Medium metal mass
- Large metal mass

Green and Red Metering Signals Proportional to the Metal Mass Detected



Options / Upgrade Kits

➤ Weather Resistant Protection

Kit for upgrading the standard version to outdoor applications according to IEC 60950-22; this kit includes shelters, crossbars, protection covers for power supply and waterproof mains power supply adapter. • 720 mm passage width (part # 55630)

- 820 mm passage width (part # 55633)



➤ Anti-vandalism, Anti-tampering Protection

This option includes stainless steel control unit, waterproof mains power supply adapter, protection covers for power supply and antenna connection compartments, equipped with screws requiring tools for removal. Part # 55629



➤ IP65 Protection

This option includes the Weather Resistant and Anti-vandalism kits. 720 mm passage width (part # 55631); 820 mm passage width (part # 55632)

➤ 820 mm Useful Passage Width

Part # 55635

➤ Long life crossbar battery back-up

Crossbar battery back-up in stainless steel case. Provides up to 8 hours of autonomous working time.

Part # 55681

UP TO 8 HOURS TYPICAL CONTINUOUS OPERATION WITH HI-PE PLUS



➤ Embedded Battery Charger and Under-voltage Protection

Anti-tamper on/off switch, RS-232 interface, battery charger with 12 hours mains disconnection diagnostic alarm.

Part # APSM2Plus/P



➤ Integrated Web-server & Logger, Battery Back-up and Charger

Anti-tamper on/off switch, RS-232, USB, 10/100 baseT Ethernet interface, data logger, real-time clock, integrated web-server, transit statistical data analysis, 20' internal battery back-up with 12 hours mains disconnection diagnostic alarm.

Part # APSIM2Plus/P



➤ High Precision Transit Counter

Two photocells fitted into the archway allow counting of transits, alarms and percentage of alarms.

Part # 32716



Accessories

➤ Chip Cards

Chip cards for simple and secure selection of Security Levels and parameter setting. List of chip-cards available on request.



➤ RCU2

Control unit for full remote access, including alarm signalling and programming of CEIA Metal Detectors.
Part # RCU2



VISUAL ALARM WITH ZONE INDICATION

➤ MBSU-2

Independent, compact size, long life power supply in weatherproof stainless steel case, with embedded fast charger:

- 14 hours typical (10 hours minimum) continuous operation with HI-PE Plus
- 5 hours typical charging time.

Part # MBSU-2



➤ MD-Scope

Powerful, PC based installation and service Software. Includes oscilloscope and terminal functionality.
Part # MD-SCOPE2



➤ Metal Detector Divesting Table

FOR MANAGEMENT OF PERSONAL METAL BELONGINGS

- Standard length: 610 mm (Part # 18074)
- Extended length: 1200 mm (Part # 39491)



➤ ID-Holder

This accessory is designed to be hung on a crossbar of the archway, either at the entrance or the exit side. It can hold, for instance, a notice or an ID number for waiting people or for the screener. Part # 54095



➤ IRC-1

Infrared Remote Controller for wireless remote programming of the control unit. Part # 47180



➤ Upper Connection Module

This extension cable allows the connection of power supply and serial communication to personal computers or CEIA accessories, such as RCU-2. Part # 46650

➤ RRU

Remote relay unit (RRU) to repeat the detection alarms of the gate through a relay contact. The RRU module can be used for integration of the Metal Detector in interlocked door systems
Part # RRU

➤ Waterproof Mains Power Supply

100W IP67 power supply for outdoor applications. It is provided with flanges for simple installation.

Part # 43564



➤ Stainless Steel Deck Dolly

FOR LOCAL MOVING OF THE PANEL METAL DETECTOR GATE

- Robust construction in AISI 316L stainless steel
- Rubber-covered castor-type wheels for easy movement
- Incorporated handles for transport

(available only for 720 mm useful passage width: part # 50789)



➤ Test Samples Kit

Reference Samples for accurate verification of the Security Level. Includes guided procedures and certificate of calibration.

- Part # EMD-SK-GAL
- Part # EMD-SK-GDML



CEIA HI-PE Plus

Enhanced Multi-Zone Metal Detector



Specifications

| | | |
|------------------------------------|---|--|
| KEY FEATURES | Wide range of threat detection from guns to ½ cutter blade | |
| | Excellent discrimination of personal metal effects | |
| | 60 zones x 2 (entry and exit side) with left, center and right indication | |
| | Met-Identity technology identifies the metal type in real time | |
| | High precision bidirectional counter with automatic rescreening compensation | |
| | Chip Card capability for fast, simple, and secure programming | |
| | Random alarm capability programmable from 0% to 100% | |
| | Exceptional Immunity to external interferences | |
| | One touch automatic self installation (OTS) | |
| | Powered by safe low voltage DC | |
| QUALITY | Standard Interfaces: RS-232, Bluetooth, Infrared | |
| | Other available interfaces: Ethernet, USB | |
| | Continuous self diagnostic system | |
| | Proven reliability | |
| WALK-THROUGH GATE STRUCTURE | No periodic re-calibration and preventive maintenance required | |
| | No scheduled maintenance | |
| CENTRAL CONTROL UNIT | Fully digital design | |
| | State-of-the-art, robust and washable panels | |
| | Protected against aging, weather and wear | |
| ALARM SIGNALLING | Ergonomic and robust design | |
| | High visibility alphanumeric display and programming keyboard | |
| | Made of advanced plastics or stainless steel and anti-vandalism construction (option) | |
| TYPE OF SIGNALLING | Access to the front panel protected by hardware key and two levels of passwords | |
| | VISUAL SIGNALS | Multi-zone display bar for "height on person" localization 4 light bars with selectable entry/exit and pacing indication Green and red metering signals proportional to the mass of the detected target |
| PROGRAMMING | AUDIO SIGNALS | 10 selectable continuous and pulsed tone plus 34 special tones 10 selectable sound intensities ranging from 0 to 90 dbA at 1m |
| | VISUAL ZONE INDICATION | Fixed or proportional to the mass in transit - visible from 6m under lighting of 4000lux 60 distinct zones (20 vertical x 3 horizontal) entry and exit side |
| OPERATIONAL FEATURES | SECURITY LEVEL | Over 40 built in security programs Remote via RS-232, Infrared Remote Control Unit, Bluetooth™ or Ethernet 10/100 base T (option) interface International Standard (IS) command Chip card Local by Control Unit alphanumeric display and keyboard Programming and chip card access protected by user and super-user passwords |
| | INSTALLATION DATA | Very high discrimination and transit flow rates five or more times greater than other metal detection systems Quick reset time as short as 0.2 seconds for high throughput rate Very high detection speed (up to 50 ft/sec.) Built-in operational functional verification One-touch key reading of inbound, outbound and Security Level Data |
| | | Automatic synchronisation between two or more metal detectors with distance of down to 5 cm without the use of external cables |
| | | Automatic Installation function (OTS) |

Environmental Data

- **POWER SUPPLY** : 100...240V~ -10/+15%, 47...63Hz, 40 VA max
- **OPERATING TEMPERATURE**: -20°C to +70°C (-37°C to +70°C upon request)
- **STORAGE TEMPERATURE**: -37°C to +70°C
- **RELATIVE HUMIDITY**: 0 to 95% (without condensation)

Certification and Compliance

- Compliant with the applicable Standards for Enhanced Metal Detectors
- Compliant with the applicable electromagnetic Standards on Human Exposure and Pacemaker Safety
- Compliant with all Airport Security Standards worldwide
- Compliant with applicable International Standards for electrical safety and EMC
- Harmless to magnetic media (floppy disks, tapes, etc.)

Comprehensive support

CEIA PROVIDES FULL OPERATIONAL AND TECHNICAL TRAINING SUPPORT BY CERTIFIED PERSONNEL EITHER AT CEIA USA FACILITY OR AT CUSTOMER PREMISES

- phone technical support
- in-house repair/services
- standard and custom training



Zona Industriale 54/G, 52041 Vicinaggio - Arezzo (ITALY)
Tel.: +39 0575 4181 Fax: +39 0575 418298 E-mail: infosecurity@ceia-spa.com

www.ceia.net

DP060K0061V1000UK
CEIA reserves the right to make changes, at any moment and without notice, to the models (including programming), their accessories and options, to the prices and conditions of sale