

# OLYMPUS

Your Vision, Our Future

## EVIS EXERA III

### CF-H185L/I

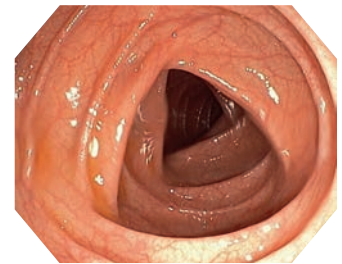
Routine colonoscopy at its best – featuring HDTV and variable stiffness.



## Main features

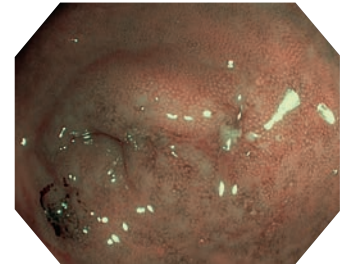
### HDTV image quality

With the new EVIS EXERA III system, HDTV image quality enables observation of the mucosa and capillaries in much more detail.



### NBI (Narrow Band Imaging)

NBI in EVIS EXERA III 185 series scopes provides twice the viewable distance of EVIS EXERA II 180 series scopes and offers much greater contrast between blood vessels and mucosa. The greatly improved performance of NBI opens up exciting new clinical applications and reinforces NBI's position as the standard of care for GI endoscopy.



### Variable stiffness

Variable stiffness helps to prevent the endoscope from re-looping, for example at the sigmoid colon, and also allows the stiffness of the scope to be adjusted on a case-by-case basis in order to meet the unique anatomical needs of each patient or the handling preferences of the physician.

### Close focus

Close focus enables you to obtain an enlarged, close-up image simply by moving the scope tip as close as 2 mm from the mucosa.

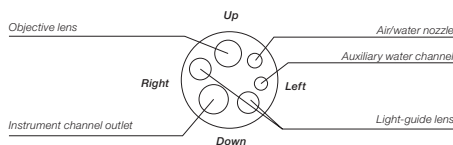
### Waterproof One-touch Connector

A new connector design minimises the effort required for set-up prior to and in between cases. In addition, it is fully submersible and eliminates the need for a water-resistant cap and the associated risk of an expensive repair due to accidental immersion.



## Specifications

<b>Optical system</b>	Field of view	140°
	Direction of view	Forward viewing
	Depth of field	2–100 mm
<b>Insertion section</b>	Distal end outer diameter	12.8 mm
	Distal end enlarged	
<b>Instrument channel</b>	Channel inner diameter	3.7 mm
	Minimum visible distance	3.0 mm from the distal end
	Direction from which endotherapy accessories enter and exit the endoscopic image	



<b>Bending section</b>	Angulation range	Up 180°
		Down 180°
		Right 160°
		Left 160°
<b>Total length</b>	L: 2005 mm I: 1655 mm	
<b>Compatible EVIS EXERA system</b>	Video system center OLYMPUS CV-190	Xenon light source OLYMPUS CLV-190

Specifications, design and accessories are subject to change without any notice or obligation on the part of the manufacturer.