

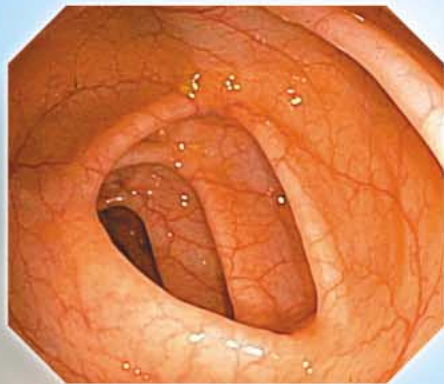
OLYMPUS[®]

Your Vision, Our Future

EVIS EXERA II COLONOVIDEOSCOPE

OLYMPUS CF TYPE Q165L/I

EVIS
EXERA II



*Versatile colonoscope combining
high image quality, large-size display,
powerful treatment capability,
and scope ID function*



EVIS EXERA II COLONOVideoscope OLYMPUS CF TYPE Q165L/I

Main Features

- Clear, sharp, high-quality images in large-size display accurately depict subtle texture and fine capillaries inside the colon.
- Generous 3.7mm diameter instrument channel accommodates a wide range of endo therapy accessories while preserving satisfactory suction capability.
- Auxiliary water jet can be combined with dedicated flushing pump, enabling removal of mucus and debris in the colon at the touch of a button on the scope or on the footswitch unit.
- 12.8 mm diameter along the entire insertion tube.
- Wide-ranging 4-way angulation (180° up/down and 160° right/left) for comprehensive examination of the colon.
- Easy-to access buttons and user programmable switches improve operability.
- Fully compatible with the CV-160/145/140.



- Scope ID function stores individual scope information in the built-in memory chip and displays it on the monitor, facilitating endoscopy suite management.

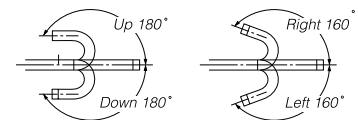
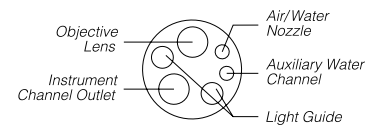


Start-up display



Specifications

Optical System	Field of view	140°
	Direction of view	Forward viewing
	Depth of field	3 to 100 mm
Distal End	Outer diameter	12.8 mm
Insertion Tube	Outer diameter	12.8mm
Bending Section	Angulation range	Up 180°, Down 180°, Right 160°, Left 160°
Working Length		L:1680 mm, I:1330 mm
Total Length		L:2000 mm, I:1650 mm
Instrument Channel	Inner diameter	3.7 mm
	Minimum visible distance	5 mm from the distal end
	Endo therapy accessory entrance/exit position in field of view	



Specifications, design and accessories are subject to change without any notice or obligation on the part of the manufacturer.

OLYMPUS[®]

www.olympus.com

OLYMPUS MEDICAL SYSTEMS CORP.
Shinjuku Monolith, 3-1 Nishi-Shinjuku 2-chome, Shinjuku-ku, Tokyo 163-0914, Japan
OLYMPUS MEDICAL SYSTEMS EUROPA GMBH
Postfach 10 49 08, 20034 Hamburg / Wendenstrasse 14-18, 20097 Hamburg, Germany
OLYMPUS AMERICA INC.
2 Corporate Center Drive, Melville, N.Y. 11747-3157, U.S.A.
OLYMPUS LATIN AMERICA, INC.
6100 Blue Lagoon Drive, Suite 390 Miami, Florida 33126-2087, U.S.A
KEYMED LTD.
Keymed House, Stock Road, Southend-on-Sea, Essex SS2 5QH, England

OLYMPUS SINGAPORE PTE LTD.
491B River Valley Road #12-01/04, Valley Point Office Tower, Singapore 248373
OLYMPUS HONG KONG AND CHINA LIMITED
Room 1520-1527, Ocean Centre, 5 Canton Road, Tsimshatsui, Kowloon, Hong Kong
OLYMPUS (BEIJING) SALES & SERVICE CO., LTD.
Room 1401, East Tower, Gong Yuan No6 Royal Palace, No6 Gong YuanXijie, JianGuoMenNei, DongCheng District, Beijing, 100005, China
OLYMPUS MOSCOW LIMITED LIABILITY COMPANY
117071, Moscow, Malaya Kaluzhskaya 19, bld. 1, fl.2, Russia
OLYMPUS AUSTRALIA PTY LTD
31 Gilby Road, Mount Waverley, VIC., 3149, Australia