

# OLYMPUS

Your Vision, Our Future

## EVIS EXERA III

### GIF-XP190N

Ultra-slim design with electrosurgery compatibility and outstanding image quality.



## Main features

### Ultra-slim design

The 5.4 mm outer diameter of the distal end eases insertion. The shape of the scope tip is carefully formed for smooth removal, which further reduces patient discomfort.

### Advanced image clarity

This scope delivers superior image quality, compared to conventional models. Its two light guides help to achieve ample brightness for precise diagnosis. The two guides also reduce shadows when using EndoTherapy devices.

### Advanced suction capability

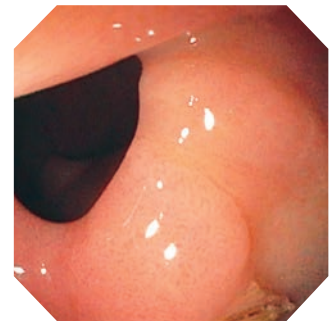
The increase in channel size to 2.2 mm improves suction volume compared to conventional scopes with a 2.0 mm channel.

### Wide viewing angle

The viewing angle of this ultra-slim scope has been increased to 140°, matching the wide field of vision of larger gastroscopes even in restricted spaces.

### Waterproof One-touch Connector

A new connector design minimises the effort required for setup prior to and in between procedures. In addition, it is fully submersible and eliminates the need for a water-resistant cap and the associated risk of a major repair due to accidental immersion.



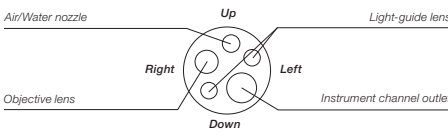
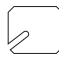
White light  
Image courtesy of Jean-Francois Rey, MD

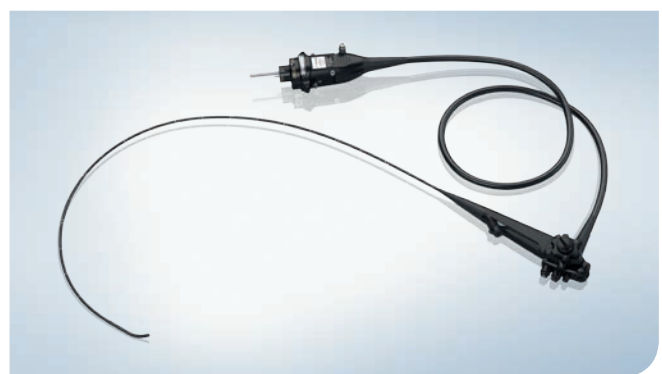


NBI  
Image courtesy of Jean-Francois Rey, MD



## Specifications

<b>Optical system</b>	Field of view	140°
	Direction of view	Forward viewing
	Depth of field	3-100 mm
<b>Insertion section</b>	Distal end outer diameter	5.4 mm
	Distal end enlarged	
		
	Insertion tube outer diameter	5.8 mm
	Working length	1100 mm
<b>Instrument channel</b>	Channel inner diameter	2.2 mm
	Minimum visible distance	3.0 mm from the distal end
	Direction from which endotherapy accessories enter and exit the endoscopic image	



<b>Bending section</b>	Angulation range	Up 210° Down 90° Right 100° Left 100°
	<b>Total length</b>	1420 mm
	<b>Compatible EVIS EXERA system</b>	Video System Center OLYMPUS CV-190 Xenon Light Source OLYMPUS CLV-190

Specifications, design and accessories are subject to change without any notice or obligation on the part of the manufacturer.