

OLYMPUS

Your Vision, Our Future

EVIS EXERA III

CF-H190L/I

A powerful tool for routine colonoscopy – standard with HDTV and RIT.



Main features

RIT (Responsive Insertion Technology)

RIT combines three proprietary insertion tube technologies: HFT (High Force Transmission), PB (Passive Bending) and variable stiffness. These technologies are designed to facilitate complete colonoscopies by improving scope handling, insertability and ergonomics. PB helps EVIS EXERA III 190 series scopes move through acute bends in the colon. HFT provides improved operator control for both pushing and twisting manoeuvres. Variable stiffness allows the physician to adjust the rigidity of OLYMPUS scopes as needed, by simply turning an adjustment ring on the scope control section.

HDTV image quality

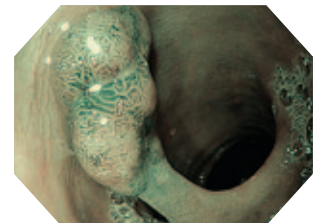
The CF-H190 features HDTV. Its close-up capability makes maximum use of a wide 170° angle of view and high-definition NBI images to support detailed observation. What's more, the distal end diameter is just as slim as that of the previous model.



HDTV
Image courtesy of Jean-Francois Rey, MD

NBI (Narrow Band Imaging)

NBI in EVIS EXERA III 190 series scopes provides twice the viewable distance of EVIS EXERA II 180 series scopes and offers much greater contrast between blood vessels and mucosa. The greatly improved performance of NBI opens up exciting new clinical applications and reinforces NBI's position as the standard of care for GI endoscopy.



NBI
Image courtesy of Jean-Francois Rey, MD

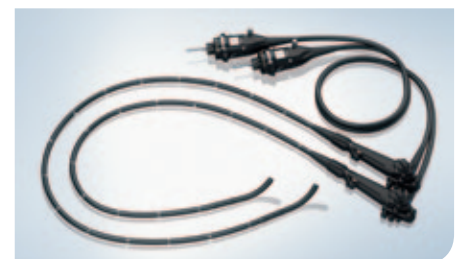
Waterproof One-touch Connector

A new connector design minimises the effort required for set-up prior to and in between cases. In addition, it is fully submersible and eliminates the need for a water-resistant cap and the associated risk of an expensive repair due to accidental immersion.



Specifications

Optical system	Field of view	170°
	Direction of view	Forward viewing
	Depth of field	2–100
Insertion section	Distal end outer diameter	13.2 mm
	Distal end enlarged	
	Insertion tube outer diameter	12.8 mm
	Working length	L: 1680 mm, I: 1330 mm
Instrument channel	Channel inner diameter	3.7 mm
	Minimum visible distance	3.0 mm from distal end
	Direction from which endotherapy accessories enter and exit the endoscopic image	



Bending section	Angulation range	Up 180°
		Down 180°
		Right 160°
		Left 160°
Total length	L: 2005 mm I: 1655 mm	
Compatible EVIS EXERA system	Video system center OLYMPUS CV-190	
	Xenon light source OLYMPUS CLV-190	

Specifications, design and accessories are subject to change without any notice or obligation on the part of the manufacturer.